

FX-36 Defender Forestry Mulcher

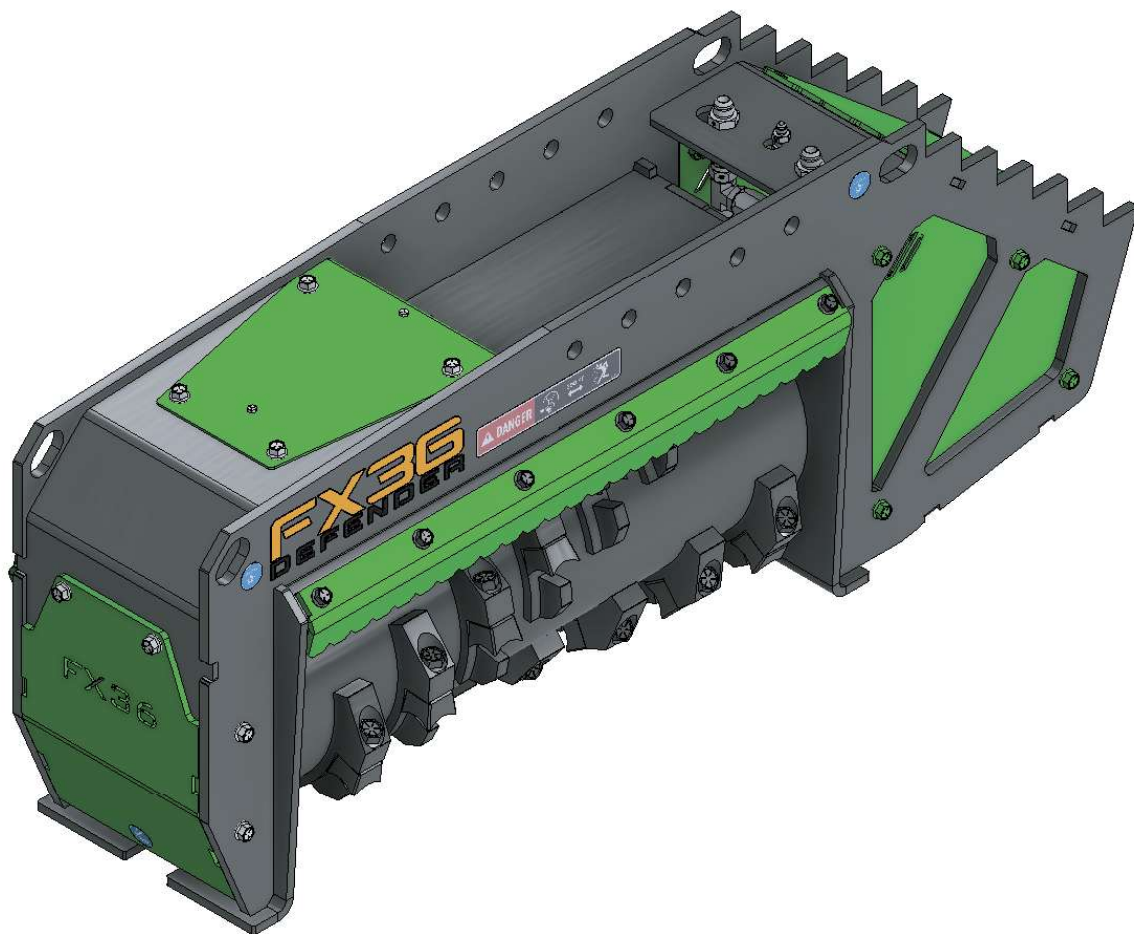


Table Of Contents

Introduction

Thank You	1
Warranty	2

Safety

Operational Safety	3-4
Maintenance Safety	4

Basic Operation

Transport / Storage	5
Attaching to / Removal from Power Unit	5-6
Starting / Shut Down / Running	7-8
General Guidelines	9

Adjustments & Maintenance

Lubrication	10
Wearable Components	11
Knife Maintenance	11-12
Bush Bar Adjustment	12
Cleaning Attachment	13
Hydraulics Maintenance	13

CALIFORNIA PROPOSITION 65



WARNING: Cancer and Reproductive Harm - www.P65Warnings.ca.gov.



ADVERTENCIA: Cáncer y Daño Reproductivo - www.65Warnings.ca.gov.

Thank You

Dear Customer,

We appreciate your purchase of a BrushHound attachment. The purpose of this manual is to familiarize you with the operation, adjustment, and maintenance of your new attachment. It was meticulously designed and constructed in accordance with the highest industry standards to provide you with years of dependable service. Before endeavoring to operate the machine, you must read this manual thoroughly and comprehend its operation. BrushHound reserves the right to make modifications to design and specifications, as well as additions and enhancements to its product, without incurring any obligation to retrofit previously manufactured items. If you ever require additional information, please contact your authorized dealer or customer service.

ATTENTION



PO Box 220 | 2507 Tully Road | Hughson, CA 95326

1-800-426-5615

www.valleytoolmfg.com

BrushHound designed this attachment with operator safety as one of its primary considerations. This attachment was designed with shielding, simple adjustments, and other safety features whenever practicable. Ensure that you and your employees read and comprehend this manual. Only responsible individuals who have been trained to operate in a secure manner and who have read and comprehend this manual should operate any machinery.

IMPORTANT TO PURCHASER

Customer Ownership Registration

Before accepting the equipment, verify the pre-delivery checklist thoroughly with the sales representative.

Ensure that you have a comprehensive understanding of the operation, adjustment, and safety principles outlined in this manual.

BrushHound Attachments is solely owned by Valley Tool and Manufacturing.

Have a farm or orchard? Own a tractor with PTO capabilities? For our full line of agricultural equipment visit: www.valleytoolmfg.com

Valley Tool & Mfg. warrants each product to be free of manufacturing defects for a period of twelve months (ninety days for rental units) from the date of delivery to the original user/owner, subject to the limitations stated in this policy.

This warranty does not apply to defects caused in whole or in part by unreasonable use while the product is in the user's possession, including but not limited to: failure to properly set up product; failure to provide reasonable and necessary maintenance; normal wear; routine tune-ups or adjustments; improper handling or accidents; operation at speed or load conditions contrary to published specifications; improper or insufficient lubrication; improper storage. This warranty also does not guarantee that the efficacy of every product will meet the purchaser's expectations.

Valley Tool & Mfg. shall not be liable for consequential damages of any kind, including, but not limited to, consequential labor costs or transportation charges associated with the replacement or repair of defective parts; lost time or expenses incurred as a result of said defects. Valley Tool & Mfg.'s total liability is limited to the purchase price of the product.

Valley Tool & Mfg. provides no warranty for trade accessories or any component or accessory of the product that was not manufactured by Valley Tool & Mfg., including any purchased components. These are subject to the respective manufacturer's warranties. If the product or any part of the product is modified or repaired in any manner not expressly authorized by Valley Tool & Mfg., or if closed components are disassembled prior to return, the warranty will be void. Closed components include gearboxes, hydraulic pumps, motors, cylinders, and actuators, among others.

Our obligation under the warranty is expressly limited, at our option, to the replacement or repair at Valley Tool & Mfg., of Hughson, California, or at a service facility specified by us, of the defective

part or parts as determined by inspection. We are not liable for unauthorized replacements or repairs. Warranty pre-approval is required. Authorized supplies will be sent to the dealer at no cost via UPS Ground. The duration of any implied or statutory warranties, such as warranties of merchantability or fitness for a particular purpose, is expressly limited to the duration of this written warranty. No one is authorized to make any other express or implied warranties on our behalf. This warranty cannot be extended, expanded, or altered unless authorized in writing by Valley Tool & Mfg. No warranty will be processed without a timely, signed "Product Registration"

The attachment owner is responsible for the travel time of mechanics and conveyance of the product to the authorized service dealer for warranty work.

The most reasonable and dealer-friendly return policy on the market is provided by Valley Tool & Mfg. The return policies for each of our brands are listed below. We accept returns within 30 days of the date of original shipment. Prior to return shipment, all returns must be approved by Valley Tool & Mfg, and a return authorization number must be issued. Returns must be in "like-new" condition and accompanied by all original factory packaging, including instruction manuals. If an item is received that is not in "like-new" condition or in its original packaging, additional fees will apply. After our staff has completed a thorough inspection of a return, refunds will be issued less shipping fees and any other potential damage fees. Please allow up to 30 business days for the processing of your account refund credit.

Please direct all return-related questions to sales@valleytoolmfg.com.

Safety

Failure to heed any of these warnings may result in personal injury or death.

A. Operational Safety

Before operating this machinery read the owner's manual thoroughly.

Do NOT operate this machine without proper training. It is the Owner's responsibility to ensure all Operators are properly trained in the appropriate language.

Use OSHA approved eye, ear and head protection to protect the Operator from flying debris and noise.

Avoid wearing loose clothing as it can inadvertently be drawn into moving parts. Never use drugs or alcohol before or during operation of this machine.

Only operate this machine when it is in good working order on an appropriate power unit that is in good working order, and with all guards and safety devices in place and functioning.

Be aware of the machine's weight and its effect on the stability of the power unit.

Use flashing warning lights when operating on highways, except when prohibited by law.

Always inspect area to be worked to ensure that the jobsite is free from obstacles and debris that could injure the operator or damage the machine.

Under no circumstances should the blades of this machine come into contact with the ground or should the machine be curled in such a way that the blades become visible to the operator.

Avoid running the machine along the ground in rocky areas as this could create dangerous discharge.

Keep bystanders and children clear of the work area during operation as debris can be discharged in a dangerous manner. The minimum safe distance from discharge is 300 ft.

Never allow children or other persons to ride on this machine.

Avoid operation that would allow hydraulic lines to be pinched or severed. In the event of a hydraulic leak, hydraulic fluid may have sufficient force to penetrate skin. Hydraulic injection injury requires immediate medical attention.

Be aware of the risks of equipment and grass fires. To mitigate those risks:

- Do not smoke or have an open flame in the work area.
- Do not operate in areas that have been freshly burned or are still burning.
- Do not allow clippings/debris to collect near hydraulic components or bearings.
- Avoid areas with high fire risk: dry grass, brush or trees.

Operation of this machine should be stopped immediately if the Operator's vision becomes obscured by the discharge of debris and dust. Also avoid operating this machine in unusually foggy or dusty conditions or at night.

Keep away from the machine until all the energy has dissipated. This includes the complete stopping of the drum's rotation as well as the dissipation of pressure in the hydraulic lines.

In the event that a failure does occur during operation or if the machine begins to produce excessive noise or vibration, shut the machine down immediately and repair before continued use.

In addition to the design and configuration of equipment, hazard control and accident prevention are dependent upon the awareness, concern and prudence and requires suitable training of personnel involved in the operation, transport, maintenance and storage of equipment.

B. Maintenance Safety

Before performing maintenance on this machine read the owner's manual thoroughly.

Maintenance should only be performed by properly trained individuals. It is the owner's responsibility to ensure all individuals involved in maintaining the machine are properly trained in the appropriate language.

Be sure to inspect all safety devices before each use. If safety devices are worn in such a way that they can no longer properly perform their guarding function contact your nearest BrushHound dealer for replacements.

Maintain all safety decals and make sure they are visible to the operator. If decals are worn, contact your nearest BrushHound dealer for replacements.

Wear gloves and eye protection and exercise care when handling blades as they can be sharp. Also be alert to worn or damaged surfaces that could have sharp edges.

Disengage hydraulics, shut off engine and allow all movement to stop before leaving the operator's position to adjust, lubricate, clean or unclog the machine. Do not try to uncouple hydraulic hoses unless the pressure has adequately dissipated.

Before working on or underneath the machine, place wheel chocks in front and back of power unit's tires or treads and under each end of the attachment to prevent accidental lowering of the machine. Also, remove the ignition key from the power unit and allow all movement to stop before beginning work.

Basic Operation

ATTENTION

Review all safety information outlined in safety section of manual before proceeding with any operation of attachment.

A. Transport

1. Transporting on Power Unit

If the attachment is being transported on the Power Unit, disengage the auxiliary hydraulic circuit and position the attachment at a reasonable driving height and position to maximize Power Unit's balance. Wait for the drum to stop rotating before transport.

2. Transporting Attachment and Power Unit

If the Power Unit is being transported with the Attachment (e.g. transporting on a trailer between jobsites), follow the Power Unit manufacturer's recommendations for transport and be sure to comply with all local regulations.

B. Storage

1. Storage Between Jobs

- a. Clean the attachment thoroughly (see "Cleaning The Attachment" section for specific cleaning instructions).
- b. Lubricate the attachment as recommended (see "Lubrication" section for lubrication details).
- c. Check wear parts and replace as necessary so you will be ready to operate when needed.
- d. Store in a clean, dry place.

2. Storage On Power Unit

When leaving the Attachment unattended while still attached to the Power Unit:

- a. Find a suitable, flat location to leave the Power Unit and Attachment.
- b. Disengage auxiliary hydraulic circuit and lower the Attachment all the way to the ground. Both the front and rear of the Attachment should be resting on the ground and positioned to avoid tipping when disconnected.
- c. Turn off Power Unit and remove ignition key. Wait for drum to completely stop rotating before leaving unattended.

ATTENTION

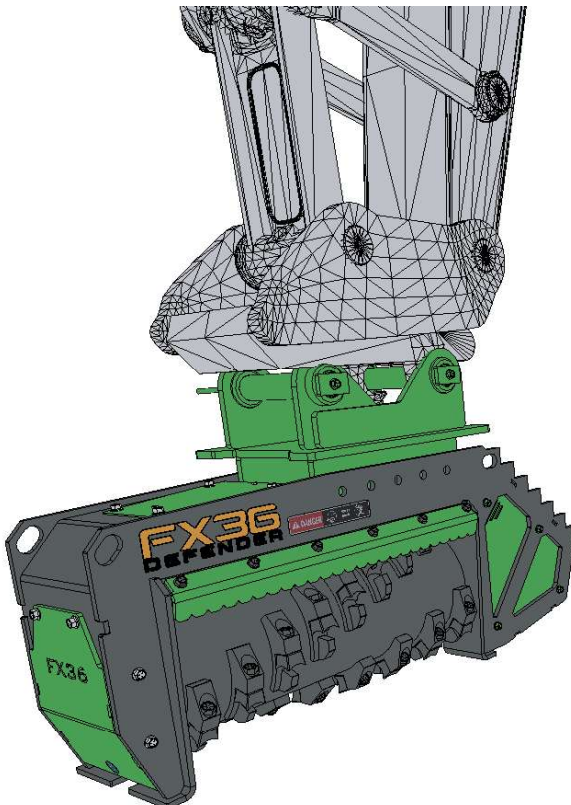
When you ordered this BrushHound attachment, it was custom matched to a specific power unit based on the details you provided. Although BrushHound attachments can fit various backhoes and excavators, this attachment is specifically designed for the power unit specified during purchase and may not work with others. The mounting and hydraulic motor of this Attachment were chosen to match with the Power Unit's boom and hydraulic system. Only connect this attachment to power units with the same specifications as the one provided. If connection to a different power unit is required, contact your nearest BrushHound dealer.

The individual handling this BrushHound attachment should have experience with safely attaching and detaching standard buckets from backhoes and excavators,. Always perform the attachment on flat ground, free from obstructions. Keep hands away from pinch points and blades to avoid injury, and make sure hoses are clear of the mounting plate during the process.

Basic Operation

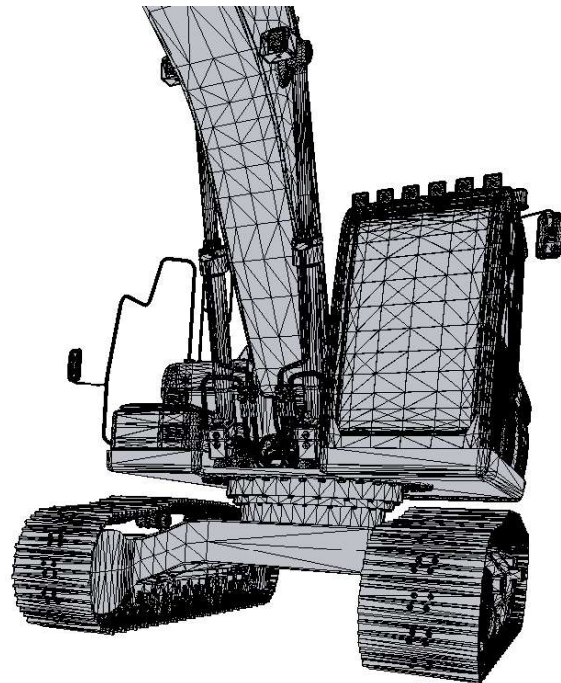
C. Attaching to Power Unit

1. Secure the correct mount for the Power Unit to the BrushHound product using the six 1" bolts provided.
2. Position the Power Unit's arm and fasten the mount just as you would with the bucket.
3. Link the Attachment's hydraulic lines to the auxiliary hydraulic circuit of the Power Unit. If the Power Unit lacks this circuit, pull the thumb all the way back and utilize its hydraulic circuit. For specifics on hose connections to the Power Unit, refer to the "Hydraulic Plumbing" section. Ensure all connections are tight and quick couplers are fully engaged.
4. Set the Power Unit to the "Hydraulic Breaker Mode" (one-way flow). If this mode or one-way flow isn't available on the Power Unit, consider adding a case drain line.



D. Removal from Power Unit

5. Choose a stable, level area to place the Attachment, ensuring it remains upright.
6. Turn off the auxiliary hydraulic circuit and gently lower the Attachment until it touches the ground. Both its front and back should be in contact with the ground.
7. Allow the drum to come to a complete stop and wait for the hydraulic system to depressurize before getting close to the Attachment.
8. Release the locking mechanisms on the mount of the Power Unit.
9. Elevate the boom to separate it from the Attachment.



Basic Operation

ATTENTION

The operator using this BrushHound attachment should have proper training and wear appropriate safety gear. Before starting the power unit, ensure the attachment is correctly assembled and installed, including mount and hydraulic connections, and that all safety devices on both the power unit and attachment are functioning properly. Keep the work area clear of bystanders and children.

E. Starting Procedure

1. Check that the attachment is in the down position and that the blades are not in contact with ground. Start engine and set throttle to idle. Never engage the auxiliary hydraulic flow with the engine above idle speed.
2. Ensure Power Unit is set to the “Hydraulic Breaker Mode” (one-way flow). With the engine at low RPM engage the auxiliary hydraulic flow.
3. Slowly bring the throttle up to maximum flow. If the Attachment produces excessive noise or vibration, disengage the auxiliary hydraulics and shut down the Power Unit immediately. Determine the cause of the problem and correct it before continuing with its operation.
4. Attachment is ready for operation.

F. Shut Down Procedure

1. Once the work is finished, disengage the auxiliary hydraulics and prepare the attachment for storage or transport (refer to the “Storage and Transport” section for proper storage instructions). Turn off the power unit, set the parking brake, and wait for the attachment to stop rotating. Allow the hydraulic circuits to release pressure back to the reservoir, as they can remain pressurized even when turned off. Only approach or let others approach the attachment when it’s safe to do so.
2. Inspect the hydraulic motor, motor protection valve, and other areas visually for signs of excessive heat, debris build-up, or leaks. Avoid touching these areas with bare skin, as they can be extremely hot. Never check for hydraulic leaks with hands, as the fluid pressure can pierce the skin, necessitating immediate medical attention. If you suspect a hydraulic leak, use a piece of cardboard or paper to check instead.

ATTENTION

FX Series attachments are crafted to handle a variety of vegetation, from grass and dense brush to medium-sized trees. To achieve optimal results, assess the state of the land and the vegetation you intend to cut. Keep in mind that brush cutting encompasses diverse conditions and is likely the riskiest mowing type due to concealed obstacles. When using this tool, always introduce larger branches or dense brush into the attachment’s side where the blades strike downwards (the inlet side).

Basic Operation

G. Running The Attachment

1. House Rotation Shredding Technique

- a. This technique is for working with lighter brush on mostly level terrain.
- b. Move the house control from side to side, keeping the cutter head just above the ground.
- c. With the Power Unit stationary, rotate the housing to let the attachment glide over the ground, maintaining the chosen cutting height.
- d. After clearing a section, advance the Power Unit forward.
- e. Make sure to leave a sufficient gap between the edge of the vegetation and the housing for clear visibility.
- f. Resume the cutting process.
- g. For denser brush, make multiple passes or move at a slower pace, especially if performance seems to decrease.

2. Top Down Shredding Technique

- a. This method is ideal for thicker brush and trees.
- b. Begin from a stationary position.
- c. Elevate the boom and angle the head so it's almost perpendicular to the tree. Ensure the knives aren't visible to avoid ejecting material at the cab / operator.
- d. If the tree's height exceeds the boom's reach and is relatively thin at its tallest point, the FX Series is designed to cut into the tree from the inlet side. This helps in trimming the tree top.
- e. Once the tree top is removed, start working downwards.
- f. Use a side-to-side sweeping motion if needed, grinding the stump until it's level with the ground.
- g. Shred any debris that might have fallen from the tree during the process. This eliminates the need for manual cleanup by crews.



House Rotation Shredding

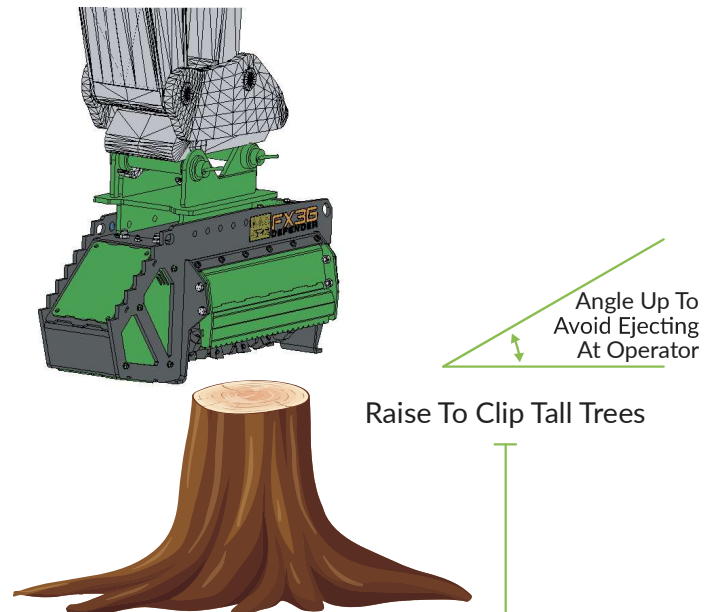
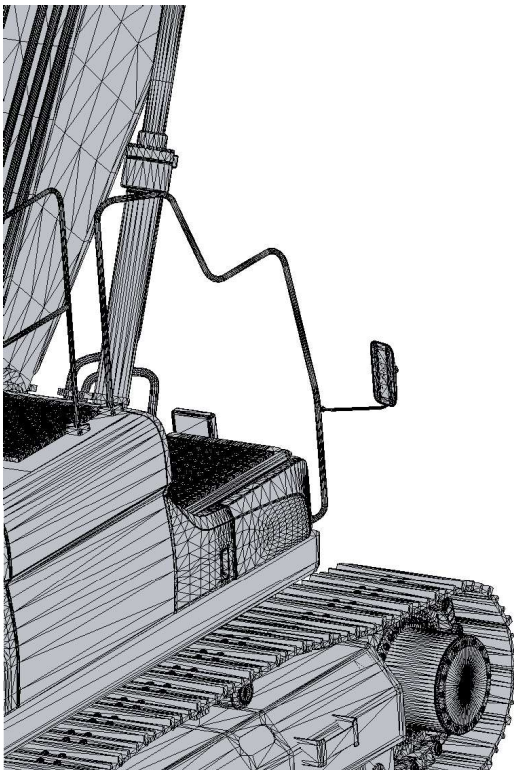


Top Down Shredding

Basic Operation

H. Basic Guidelines

1. This attachment operates most efficiently when the knives are sharp and rotating at full RPM. The recommended shaft speed for this unit can typically ranging between 1700-2200 RPM.
2. Before starting a job, inspect the work area and remove any hidden hazards, such as large rocks, utility lines, fencing, and concealed debris like broken glass or bottles. Projected debris may pose risks to operators, pedestrians, livestock, or cause property damage, so it is crucial to ensure the area is clear prior to commencing work.
3. During the work area inspection, watch for bees, fire ants, poison ivy, or poison oak. Additionally, be mindful of unsuitable working conditions, like overly saturated grounds that can create slippery conditions. Identifying potential hazards in the area will not only improve productivity but also enhance safety.
4. Never permit bystanders to be close to the mowing or brush cutting operations, nor allow them to climb on the machine.
5. Overloading or “lugging down” the cutter can significantly reduce its cutting capacity and cause an increase in hydraulic oil temperature. Pay attention to the cutter drum speed, and lift it out of the cut until maximum speed is regained before resuming the operation
6. Avoid using this attachment as a bucket for digging up roots or spreading piles of dirt. Such misuse can cause damage that is not covered by the warranty, and repairs may be costly.
7. Do not operate the attachment unless the safety guards are securely fastened in place.
8. Abuse may be indicated by drum damage or premature knife failure. To prevent abuse, always reduce the cutting load before the cutter drum speed drops significantly.



Adjustments & Maintenance

ATTENTION

Before proceeding with any adjustments or maintenance, review all safety information provided in the safety section of the manual to ensure proper procedures are followed.

A. Lubrication

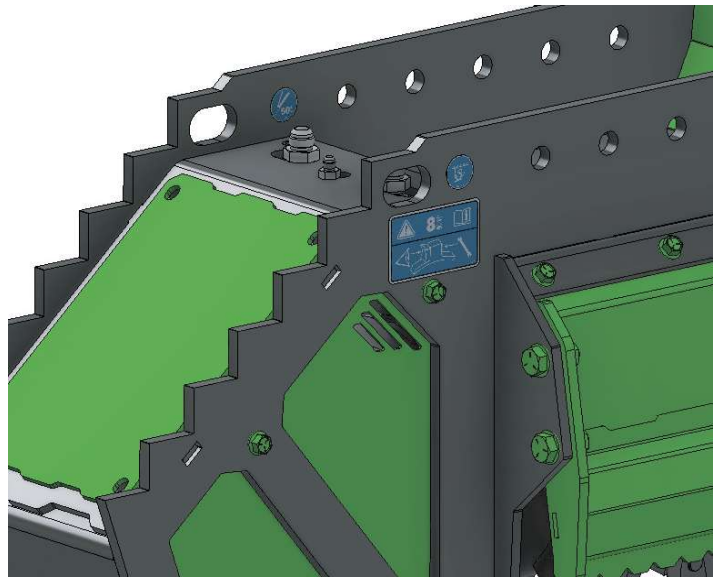
The FX Series includes **two** lubrication points, identified by a blue sticker (DC-134) grease fittings. Use only BrushHound-approved grease or a compatible grease with similar specifications and EP additives. BrushHound recommends Mobilith SHC 100 Grease for all FX grease points. Over-greasing seals and bearings may cause damage; if grease escapes from the bearings' seals, this suggests excessive greasing. Expelled black grease with a burnt smell could indicate a history of over-greasing.



1. Idle Bearing

The idle bearing can be found beneath the Idle Side Bearing Cover, equipped with a grease fitting on its mounting flange. It's already filled with premium grease, and the frequency of its lubrication is determined by the operational conditions. Under standard operation, apply 1 pump of grease every 50 hours.

If bearings are frequently exposed to wet conditions, more frequent greasing may be necessary. Do not use Molybdenum grease.



2. Housed Drive Bearings

The motor spindle has a set of 2 angular contact bearings in a housing on the drive shaft with a grease fitting located on the hydraulic bulkhead cover. The housing comes pre-packed with high quality grease and requires relatively infrequent greasing. Only 1 pump of grease should be necessary every 50 hours during normal operation. If the motor is removed or the bearings changed, the housing should be repacked as follows:

- 50% fill inside bearing
- 100% fill in housing

Adjustments & Maintenance

B. Wearable Component Maintenance

1. Rubber Isolation Disk

This disk, found between the drive side end plate and bearing housing, dampens vibrations from the drum and motor. It lasts over 1000 hours but requires regular checks for wear. If it's thin, torn, or when the cutter drum is removed, replace it.

2. Hydraulic Hoses

Regularly inspecting the hydraulic hoses inside the motor guards is crucial. Though they are positioned to minimize wear from contact with metal surfaces, heavy vibration may cause them to shift. Check for signs of excessive wear during routine maintenance to ensure optimal functioning.

3. Bearings

Bearing failure can result in excessive vibration, noise, or even the complete seizing of the cutter drum. Signs of impending bearing failure may be subtle and hard to identify without the right diagnostic tools. As a preventive measure, it is recommended to replace bearings every 1500-2000 hours of operation, depending on the environment and equipment usage.

4. Safety Guards

Safety guards are crucial for protecting the operator, bystanders, and surrounding property. They must never be removed during operation. Make sure each safety guard is in good condition and able to perform its protective function. Replace any worn or rust-damaged guards to ensure safety. To prolong the guards' lifespan, clean them regularly and maintain their paint, which helps shield them from the elements.

5. Safety Decals

Safety decals are vital for informing the operator and bystanders about potential hazards associated with the machine. Always ensure that these decals are easily visible and unobstructed. If they become faded or worn, replace them to maintain clear communication of safety warnings.

C. Knife Maintenance

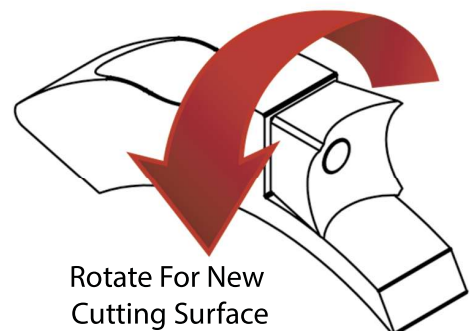
The FX Series is engineered for forestry mulching, making it crucial to maintain sharp knives for optimal cutting efficiency. The standard cutting tool is equipped with a hardened steel knife, featuring multiple cutting surfaces for sharpening, rotation, or replacement when needed (some models offer an upgraded carbide blade that can be rotated or replaced). Ensuring the knives are sharp and well-maintained guarantees top performance for your forestry mulching projects.

1. Rotating

The standard knife provided features 4 cutting surfaces, permitting up to 3 rotations in the field where replacement parts or sharpening equipment may be unavailable.

To rotate the knife:

1. Loosen the retention bolt
2. First rotation 180°, second rotation 90°, and third rotation at 180°. (See diagram)
3. Retighten to 320 ft-lbs with a grade 8 bolt.

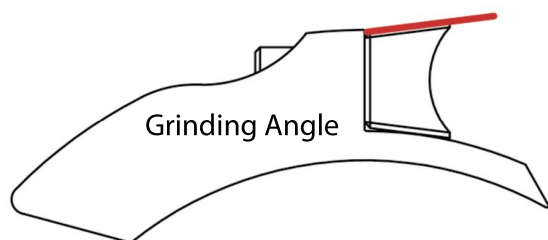


Adjustments & Maintenance

Take note that the limiter on the knife holder prevents the sharp corner from being centered; this is intentional, as the U-shaped surface is the cutting portion, not the corner.

4. Sharpening

To sharpen the knives in the holder, use a grinder. Align the grinder with the flat V-shaped side and surface the outer edge of the knife. (See diagram)



5. Replacing

The last option is replacement. Remove the knife by unbolting it and replace it with a new one, tightening to 320 ft-lbs using a grade 8 bolt.

E. Cleaning The Attachment

Cleaning the Attachment regularly will help prolong the life of both the paint and the safety decals as well as minimize the risk of unintentional fire.

1. Check for excessive grease in the bearing areas, cleaning off any excess found.
2. Clear debris from the hydraulic hose area, bearing area or any other area that may experience excessive heat.
3. Clean the inside and top of the Attachment with a pressure washer, removing any accumulated mud, grass or other debris. Keep in mind, mud build up on the cutter drum can cause imbalance.
4. Touch up paint where needed as this will help prevent rust.

F. Optional Mounts

This Attachment is equipped with a mount tailored for the Power Unit. However, if you wish to use the Attachment on multiple Power Units, you can buy additional mounts. To attach a mount, align its holes with those on the Attachment, then use the 6 supplied 1" bolts, securing them with the included nuts and washers. Before switching Power Units, consult your nearest BrushHound Dealer to ensure compatibility.

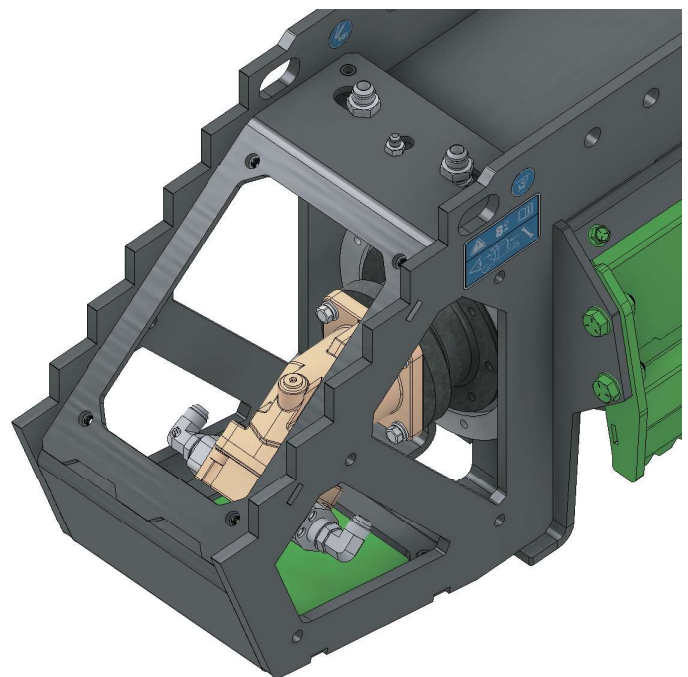
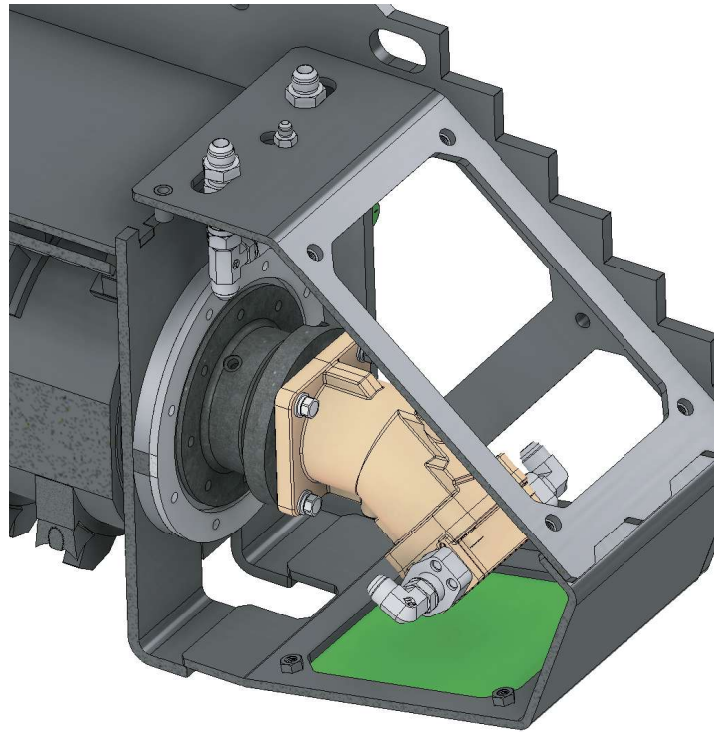
G. Hydraulic Maintenance

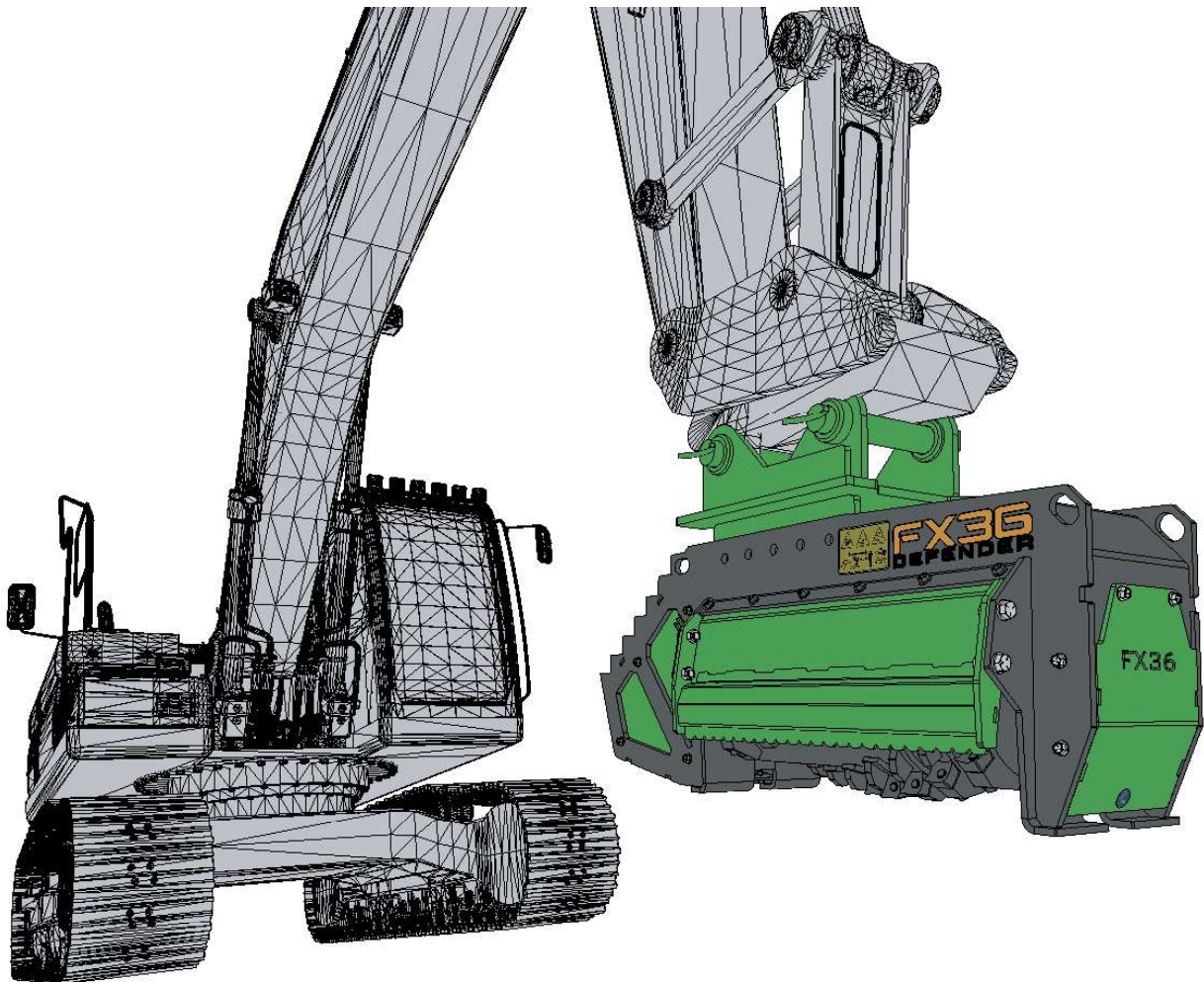
Adjustments & Maintenance

Before performing any maintenance on the hydraulics of the Attachment, ensure that circuit is depressurized. If there is a suspected leak, use a piece of cardboard for inspection. **DO NOT use hands to feel for leaks.**

The hydraulic circuit should be connected as follows:

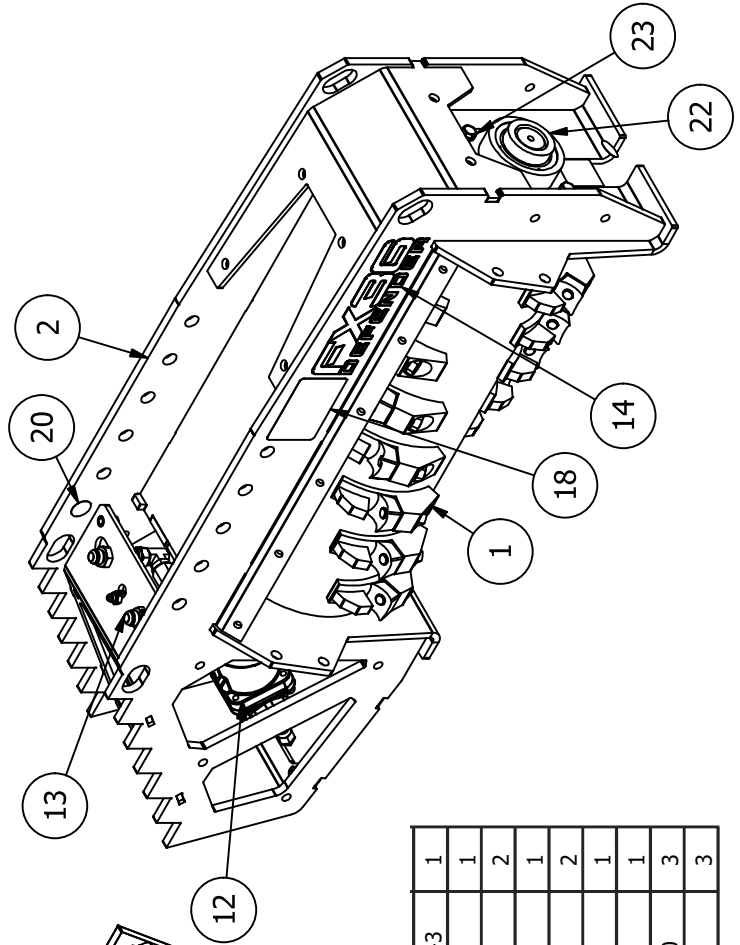
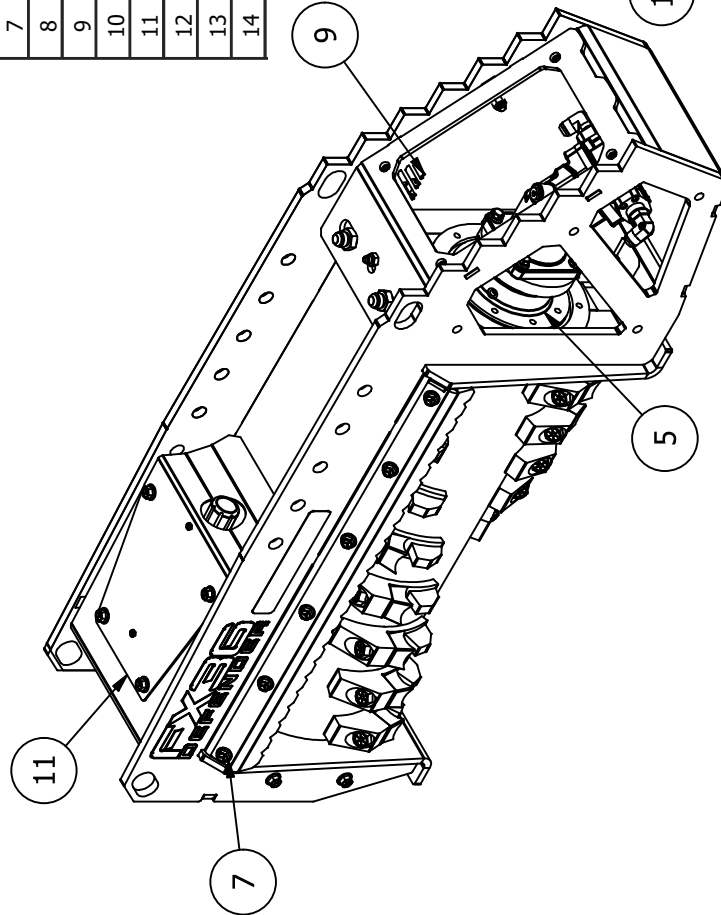
1. Pressure In - This attaches to the Power Unit's high pressure line. On some units it may be necessary to switch the male and female quick connectors depending on the Power Unit's configuration.
2. Check Valve - Protects the motor from cavitation that would damage the motor's internal seals by allowing spindown.
3. Supply Line - As the drum is only capable of cutting when spinning in one direction, the supply line should always run from the pressure port of the MPV to the in port side of the motor.
4. Return Line - The return line should connect the out port side motor port to the relief port of the MPV.
5. Pressure Out (return line out) - Connect to the return side of the Power Unit's hydraulic circuit.





Parts: DIAGRAM 1

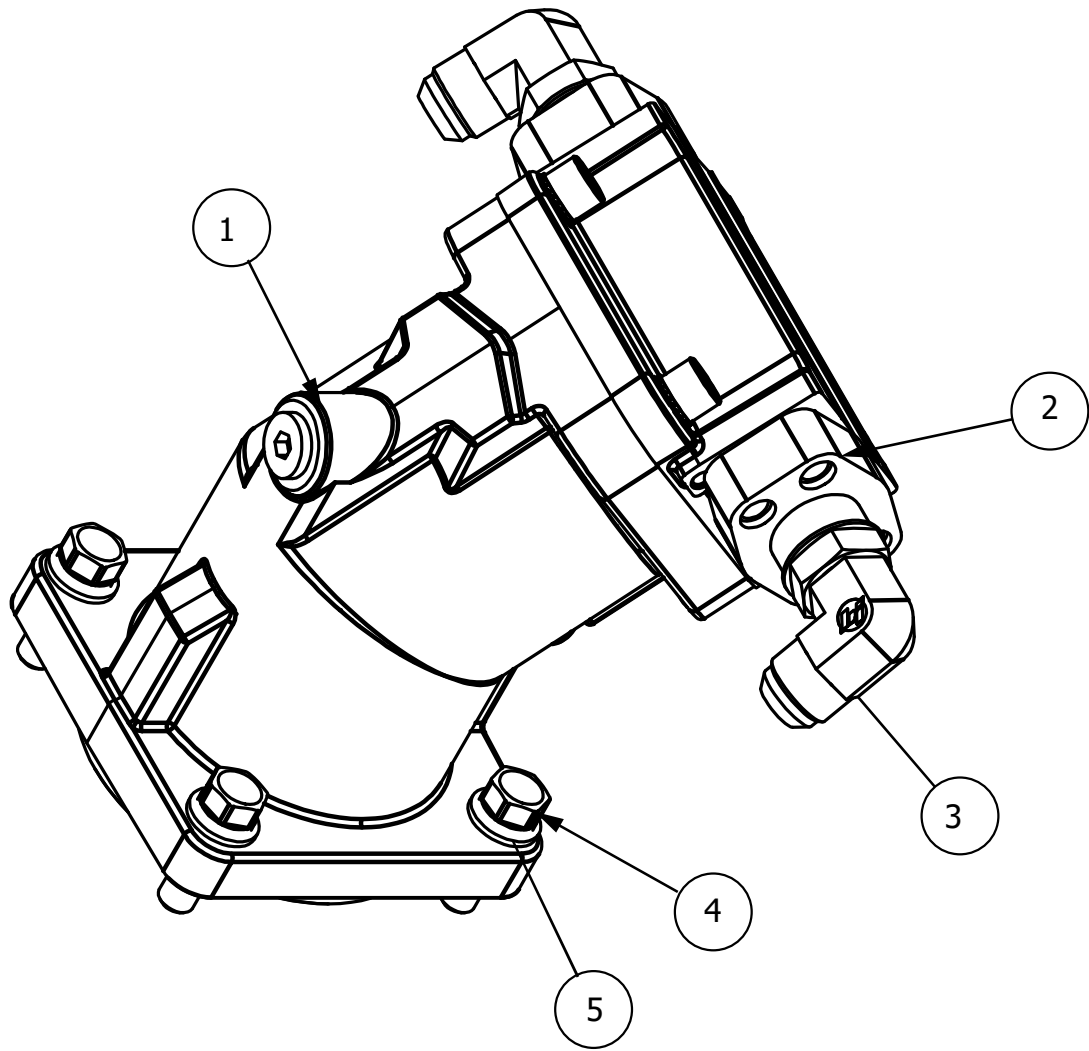
#	DESCRIPTION	PART NUMBER	#
1	Assembly FX36 Cutter Drum -	2640-RH-4	1
2	Assembly FX36 Shield Weldment	2643-RH-4	1
3	Assembly Drive Wire Guard	2647-RH-4	1
4	Assembly Idle Wire Guard -	2648-RH-4	1
5	EX SPINDLE HOUSING ASSEMBLY WITH BEARINGS	06288	1
6	ASY EJECTOR GUARD V2 FX36	07641	1
7	ASY FX36 RECUTTER BAR WITH HARDWARE	07648	1
8	ASY IDLE BEARING NOSE COVER FX36	07650	1
9	ASY MOTOR GUARD RH FX36 ASY MOTOR GUARD LH FX36	07666	1
10	ASY UPR NOSE GUARD W/ HDWE AND HOLDER	07667	1
11	ASY 63CC PISTON MOTOR WITH PLUMBING FX36	07671	1
12	CHECK VALVE 3/4IN 5KSI FX36	07679	1
13	DECAL FX36 DEFENDER	07680	1
14	Drive Side Cover	DC-248	1



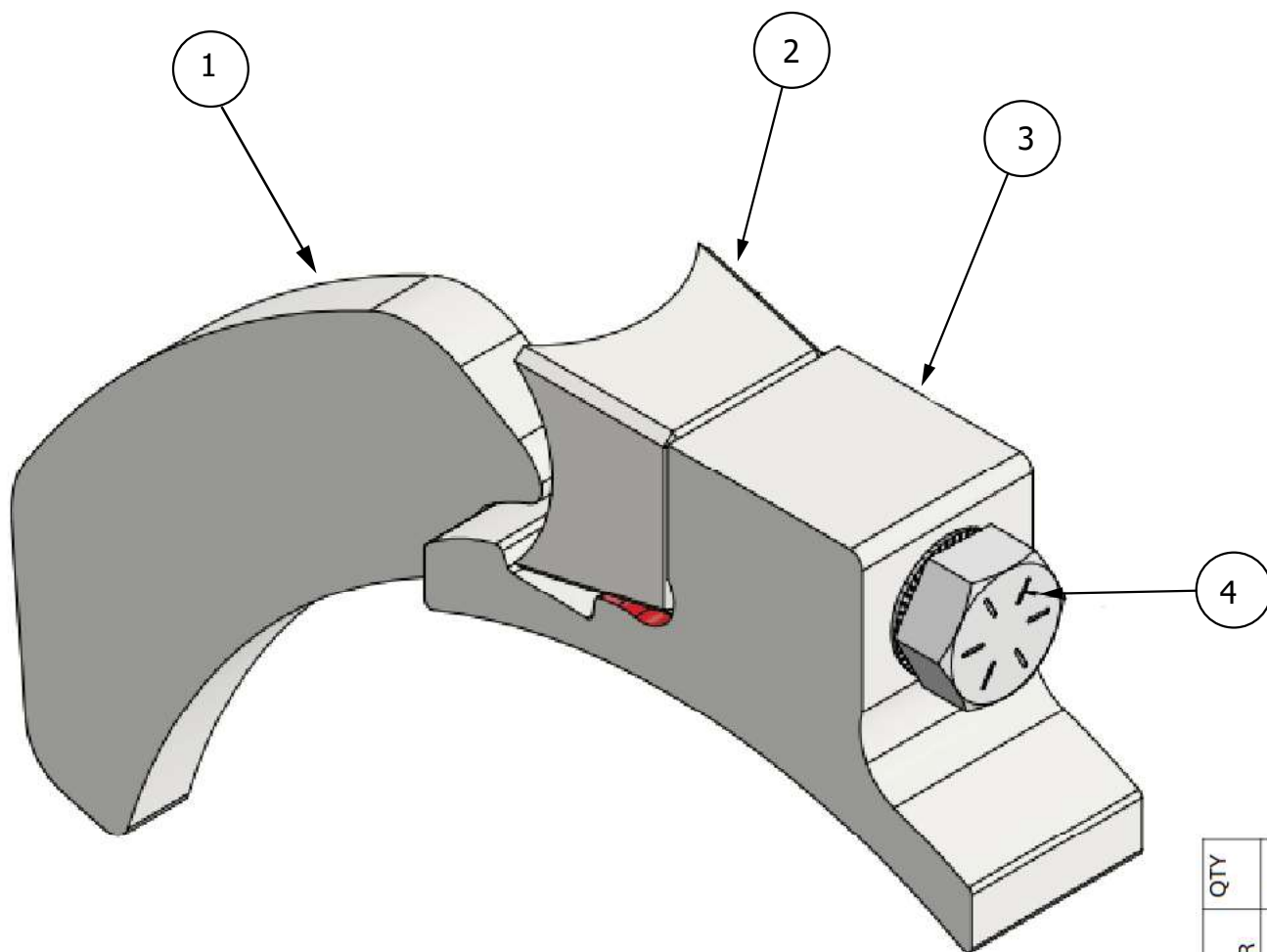
15	GUARD REAR THUMB SADDLE UPPER FX36	2806-RH-3	1
16	GUARD REAR LOWER FX36	07663	1
17	DECAL READ BEFORE OPERATING 4X6	07664	2
18	DECAL ROTATING CUTTER DRUM 1.75 X 10	DC-220	1
19	DC-234 GREASE 50 HOURS	DC-222	2
20	DC-242 INSPECT KNIVES TORQUE	DC-234	1
21	2-7/16" DRS Bearing	DC-242	1
22	5/8-11 UNC 2 1/4" Bolt	CD-3000	3
23	5/8" Lock Washer		3

Parts: DIAGRAM 2

ITEM	DESCRIPTION	PART NUMBER	QTY
1	HYD. PISTON MOTOR - 63CC SIDE PORTS	HY-2963	1
2	1929-62-SAE Port Block - Code 62 (O-Ring Face)	1929-62-12-12	2
3	6801-NWO-FG-MJ-MAORB 90° Elbow	6801-12-12-NWO-FG	2
4	1/2-13 UNC 1-3/4 Bolt	92865A718	4
5	1/2" Washer GR 5	90126A211	4

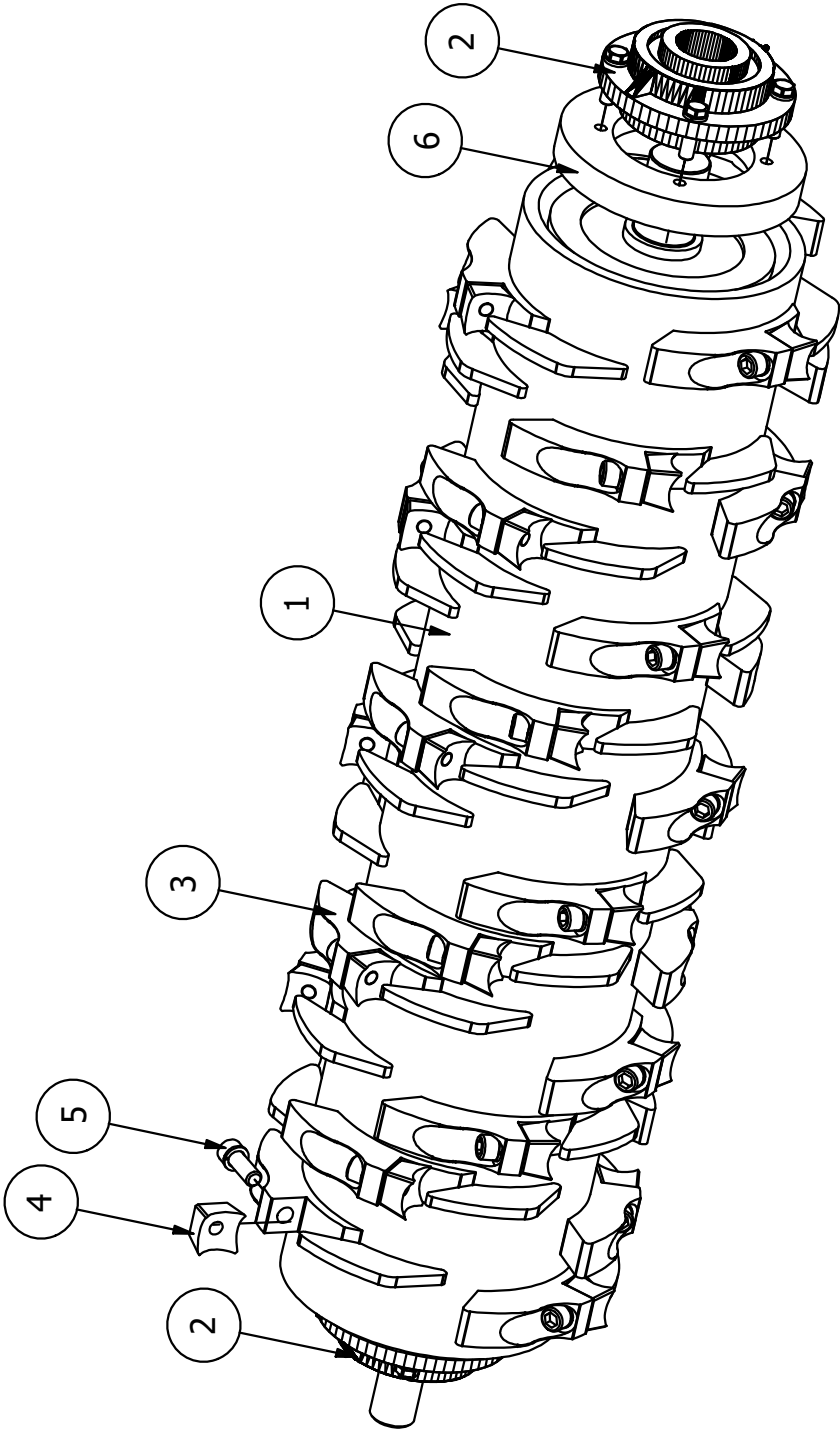


Parts: **DIAGRAM 3**



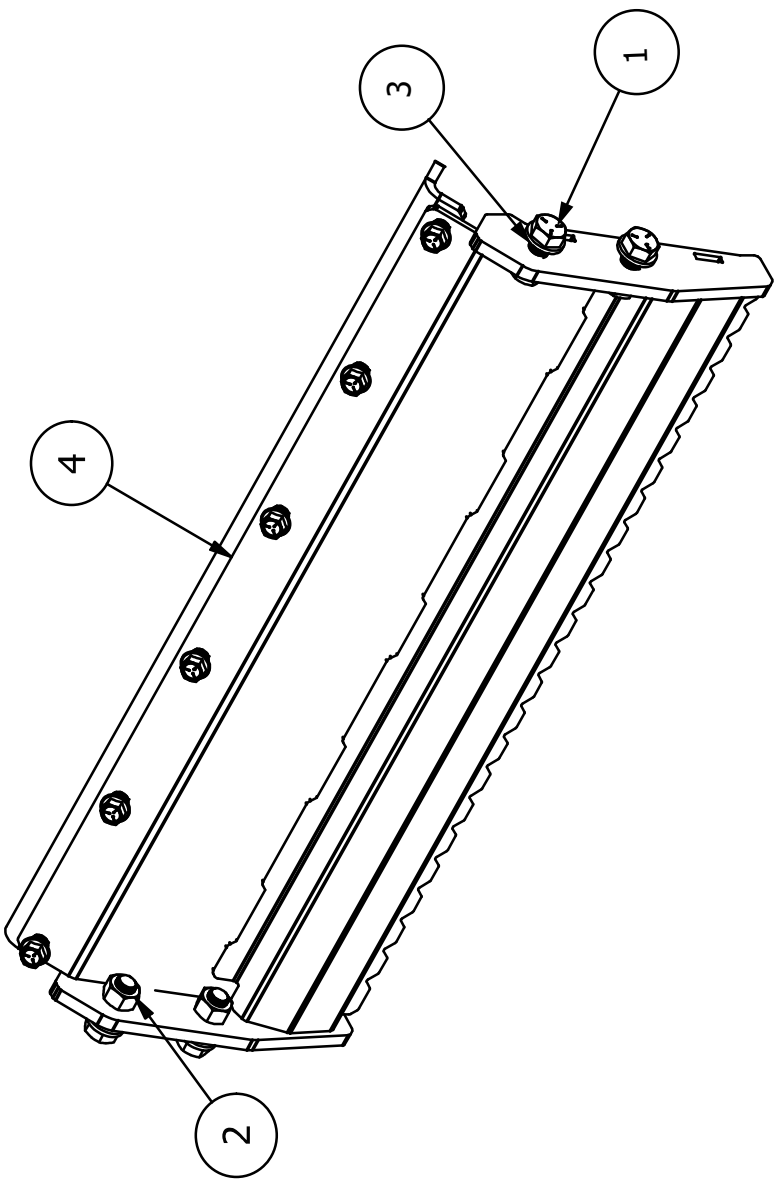
ITEM	DESCRIPTION	PART NUMBER	QTY
1	BITE LIMITER FHX 12.75 ID LONG	08599	1
2	Quadco Knife	QH10110	1
3	TOOL HOLDER 12IN PIPE 2IN QUADCO	08841	1
4	HHCS 3/4-16 X 3.0 GR8 YLZN	91257A877	1

Parts: DIAGRAM 4



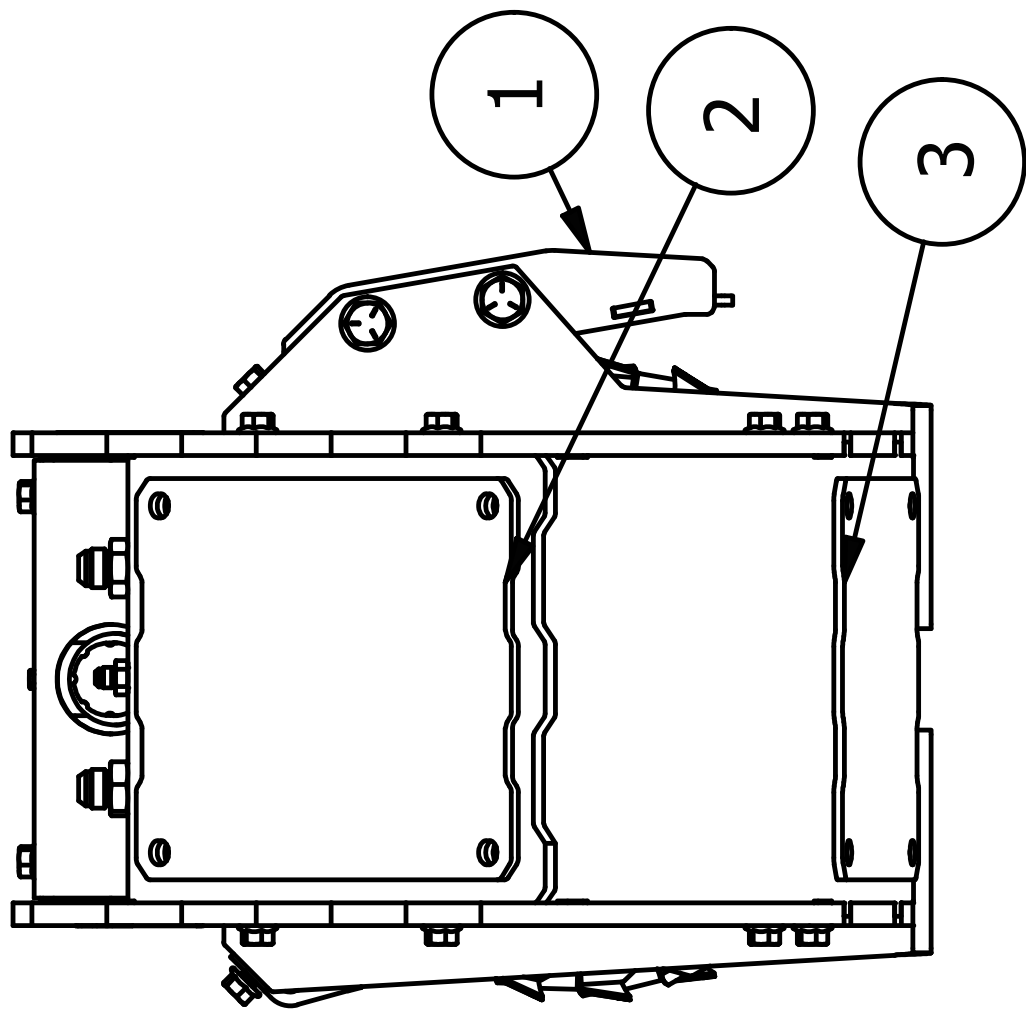
#	DESCRIPTION	PART NUMBER	#
1	CUTTER DRUM - 54IN	2557-RH-2	1
2	CUTTER DRUM BEARING	CD-3050	2
3	TOOL HOLDER - CUT LIMITER	04176	36
4	QUADCO KNIFE	QT-3000	36
5	FHX66 BOLT KIT (36 BOLTS + WASHERS)	QT-3100K	1
6	WIRE GUARD	2625-RH-3	1

Parts: **DIAGRAM 5**



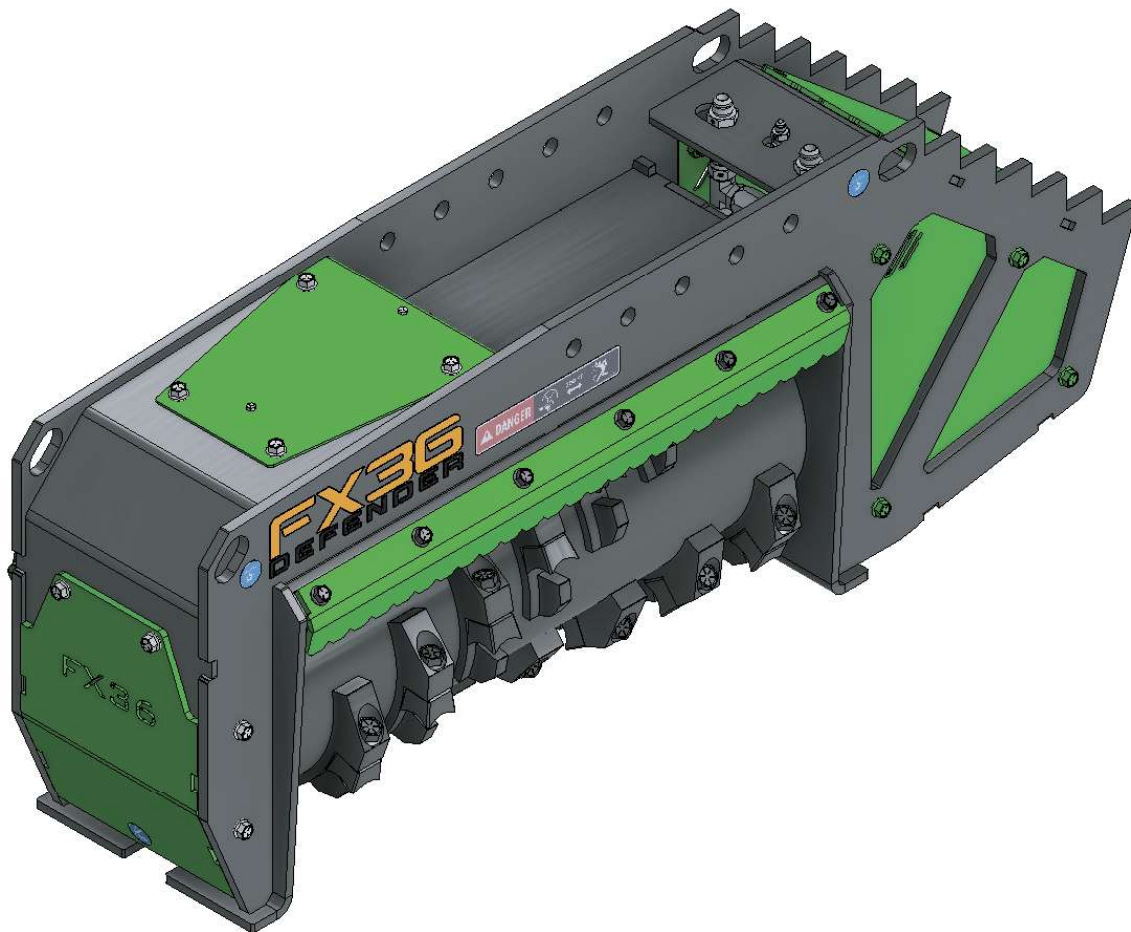
ITEM	DESCRIPTION	PART NUMBER	QTY
1	HHCS 3/4-10 X 2 GR5	92865A843	4
2	NUT 3/4-10 GR5	95462A538	4
3	WASHER 3/4 SAE CLZN	90126A036	4
4	ASY FX36 RECUTTER BAR WITH HARDWARE	07648	1

Parts: DIAGRAM 6



ITEM	DESCRIPTION	PART NUMBER	QTY
1	ASY EJECTOR GUARD V2 FX36	07641	1
2	GUARD REAR THUMB SADDLE UPPER FX36	07663	1
3	GUARD REAR LOWER FX36	07664	1

REVISION: FX36-231116



FX-36 DEFENDER OWNER'S MANUAL



VALLEY TOOL
MANUFACTURING COMPANY

PO Box 220 | 2507 Tully Road | Hughson, CA 95326 | 800-426-5615
www.valleytoolmfg.com