

MiniMax Flail Mower

The Vrisimo MiniMax Flail Mower series is a **reliable and efficient option for maintaining acreage** at an affordable cost. Available in 48-, 60-, and 72-inch cutting widths, these mowers provide the right size for a wide range of jobs. Whether you're working in fields, orchards, or gardens, the MiniMax delivers consistent performance with a strong balance of power and control.

Keep your property well-maintained with the dependable and easy-to-use Vrisimo MiniMax Flail Mower series.

Cut Width



48-72"

Material Capacity



1"

Weight



450-490 lbs

HP Required



18-22

Mow Height

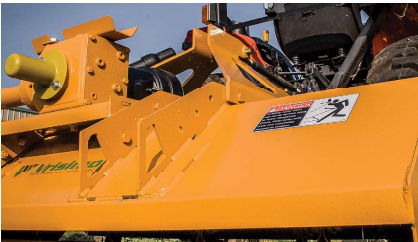


0-3.5"

Duty



1-20 Acres



The MiniMax Flail Mower's **40 HP gearbox** is **robust**, ensuring **efficient power transfer** for reliable and consistent performance



Adjustable Cat-1 hitch allows center-mounting or **6-inch offset**, enhancing versatility for mowing around obstacles and structures.



Adjustable rear roller with a range of **0 to 3.5 inches**, providing versatile cutting heights.



Optional skid shoes prevent end plate damage, offering added protection and durability during operation on various terrains.

Mini Max Specifications

Model #	MM48	MM60	MM72
Cutting Width	48"	60"	72"
Overall Width	56.25"	68.25"	80.25"
Weight	450 lbs.	470 lbs.	490 lbs.
Number of Scoop Knives	24	30	36
HP Requirement	18	20	22

KEY FEATURES

- **Range of HP Compatibility:** Designed to work efficiently with tractors ranging from 18 HP to 22HP, making it suitable for a variety of equipment.
- **Width Options:** 48", 60", and 72" cutting width to accommodate various land maintenance needs.
- **Quick Hitch Compatibility:** The Vrisimo MiniMax Flail Mower is Quick Hitch compatible, streamlining the attachment process for effortless and efficient setup on your tractor.
- **Affordable:** High quality flail mower at an entry level price point.
- **PTO:** Driveline Included Free of charge.
- **Durability:** Heavy Duty ball bearings and wire guards for long life.

Blades



CD-2110



CD-2100



CD-2115MM

